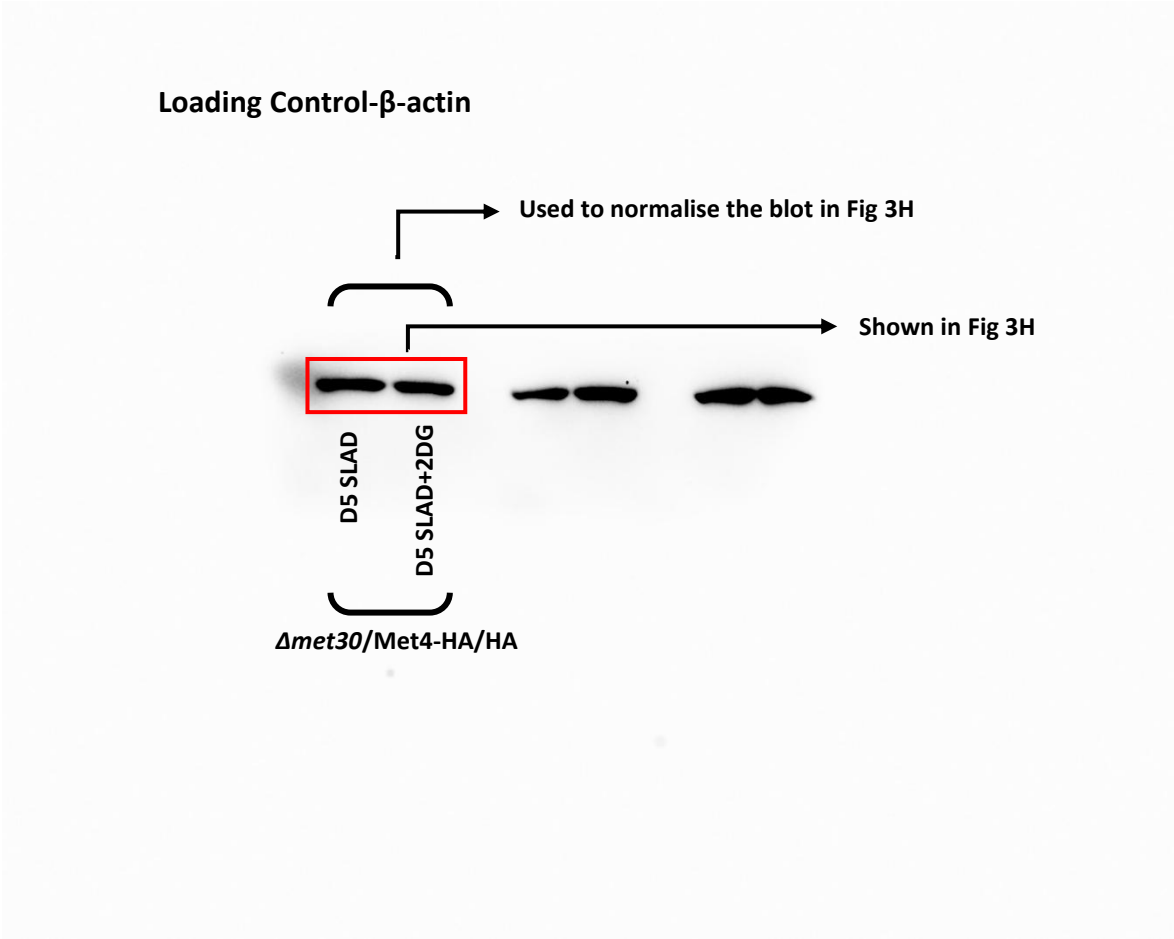


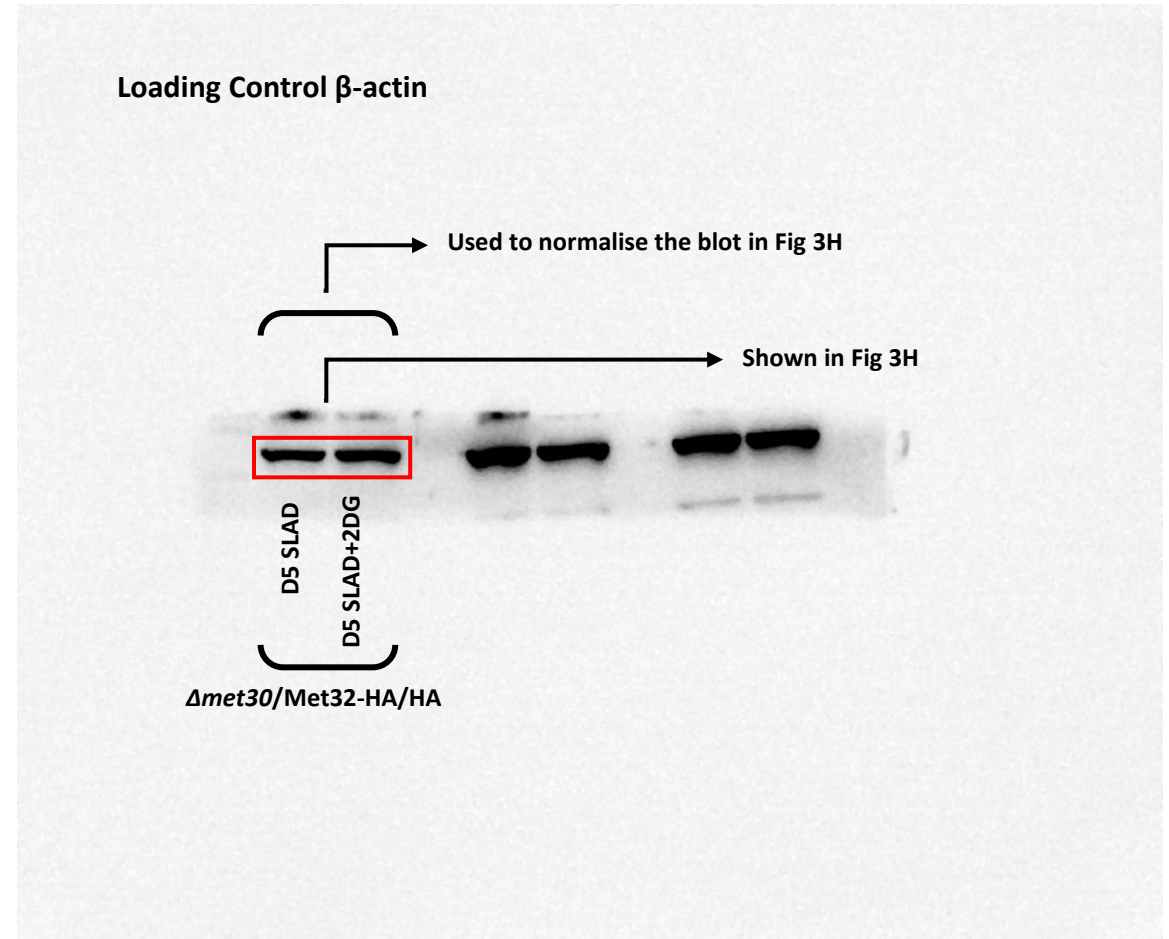
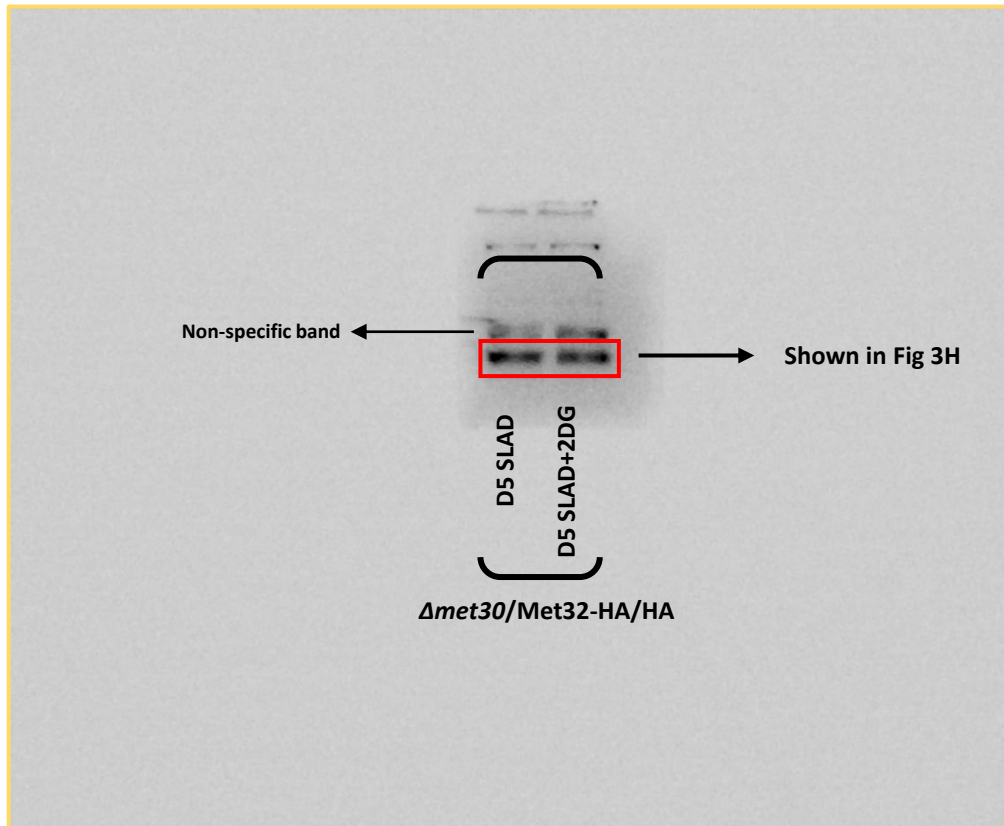
*Δmet30*/Met4-HA/HA

Figure 3H – Met4 levels in SLAD and SLAD+2DG condition



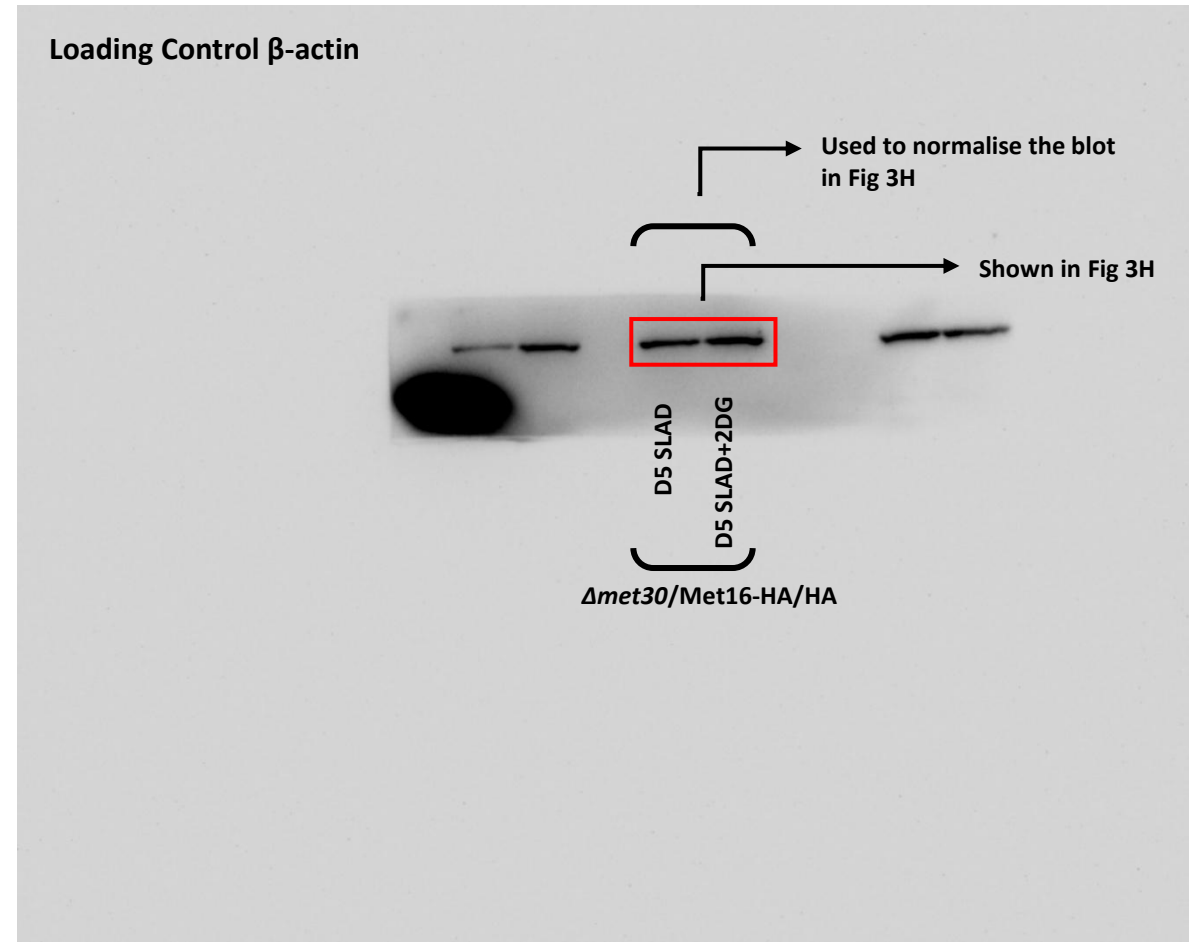
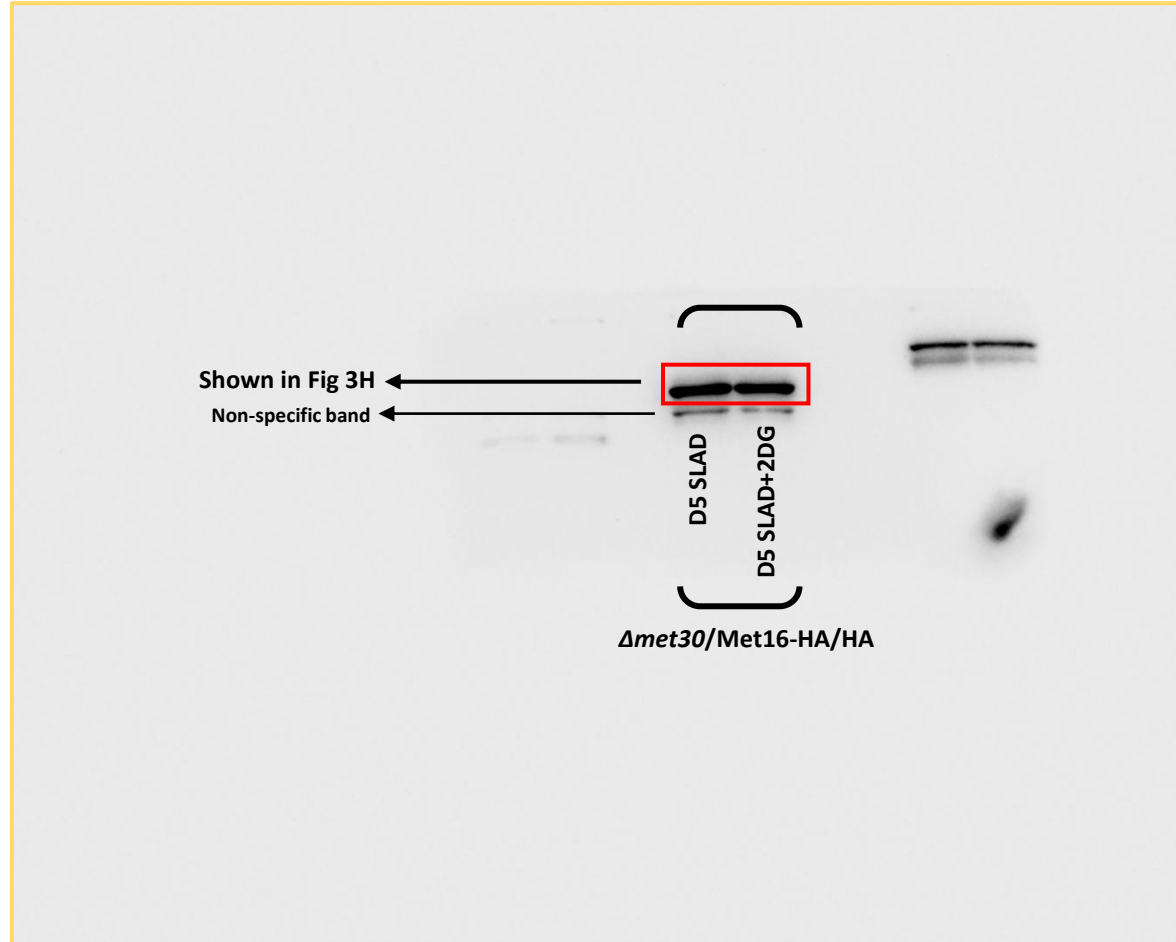
## $\Delta met30$ /Met32-HA/HA

Figure 3H – Met32 levels in SLAD and SLAD+2DG condition



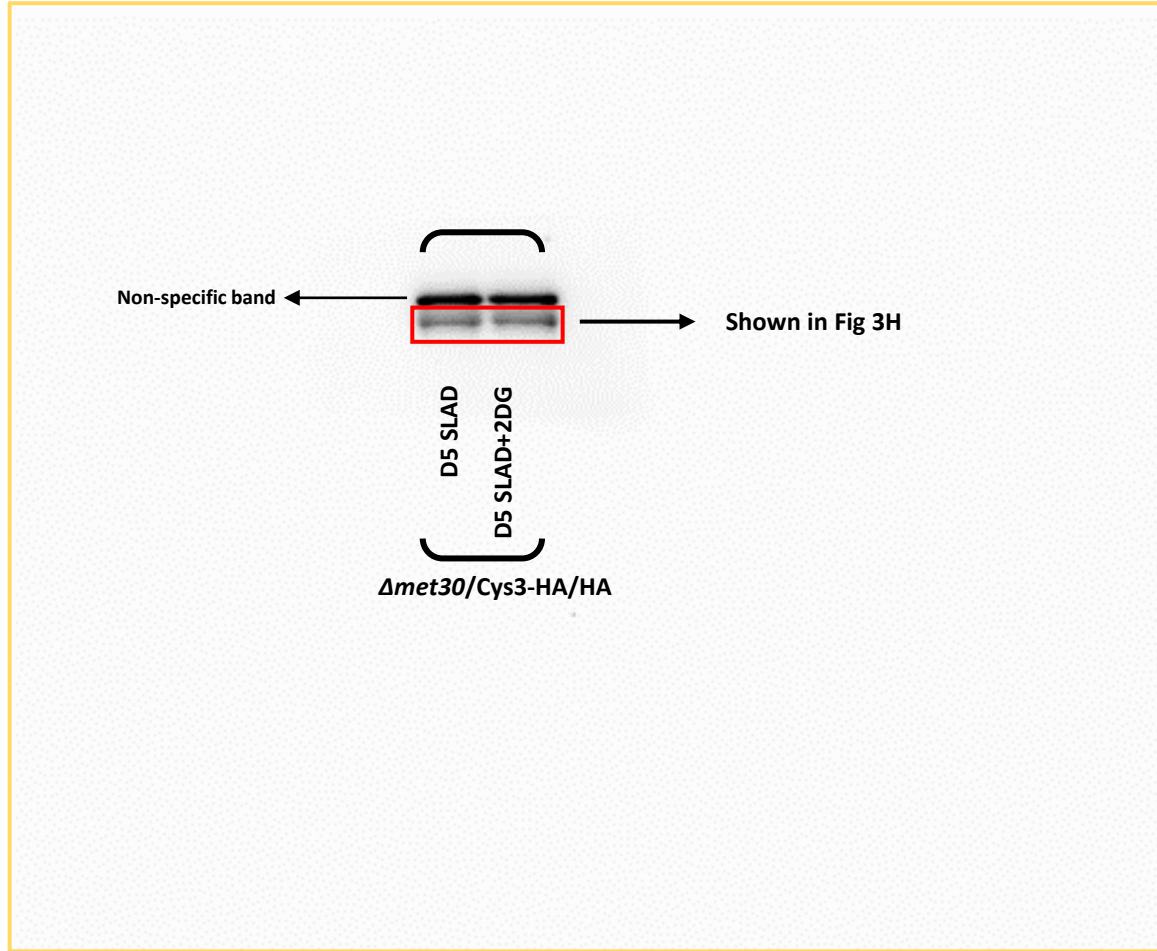
## $\Delta met30$ /Met16-HA/HA

Figure 3H – Met16 levels in SLAD and SLAD+2DG condition

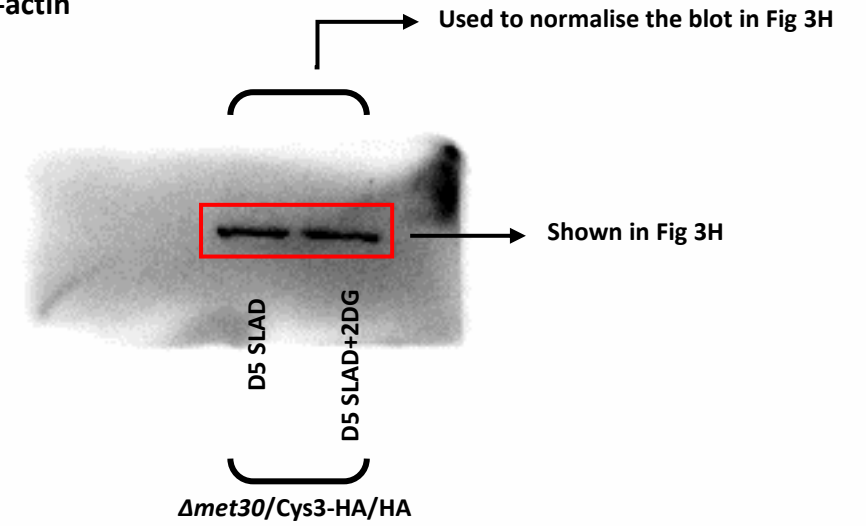


# $\Delta met30/Cys3-HA/HA$

Figure 3H – Cys3 levels in SLAD and SLAD+2DG condition



Loading Control  $\beta$ -actin



Met30-HA/HA

Figure 3J – Met30 levels in SLAD and SLAD+2DG condition

